

YOUR GUIDE TO PLANTING CONTAINERIZED AND BARE ROOT TREES

A STEP-BY-STEP GUIDE FOR TREE PLANTERS

TEN MILL¹ON
TREES
FOR PENNSYLVANIA



WHAT'S THE DIFFERENCE?

CONTAINERIZED TREES: These are trees that are grown in a container for approximately 12 months prior to planting, giving them time to establish a healthy root system. This gives them a very high success rate in comparison to bare root trees. There is often a wider selection of trees available when selecting containerized trees.

BARE ROOT TREES: These are trees grown in fields and are lifted without soil when they are transplanted. They are only available during the dormant phase of the cooler temperature season, after the tree has lost its leaves but before they begin regrowth in spring. Bare root trees are easier to transport, and easier to plant. They can be a good choice for large scale plantings.

Use this guide to help you choose what type of tree to plant - containerized or bare root trees, and how to plant and care for them.

TENMILLIONTREES.ORG

HOW TO PLANT CONTAINERIZED TREES

BEFORE YOU PLANT YOUR TREE(S) MAKE SURE YOU HAVE:

- Planting instructions
- Scissors
- Spade or shovel
- Small bag of mulch

PLANTING INSTRUCTIONS:

- Dig a hole 2 to 3 times wider than the tree pot and the same depth as the container.
- Loosen the tree's roots by tapping the pot. Keep the soil around the roots intact.
- If the roots are tangled cut an "X" across the bottom of the root ball and score the sides.
- Set the tree in the middle of the hole at ground level.
- Firmly pack the hole with soil and water your tree.

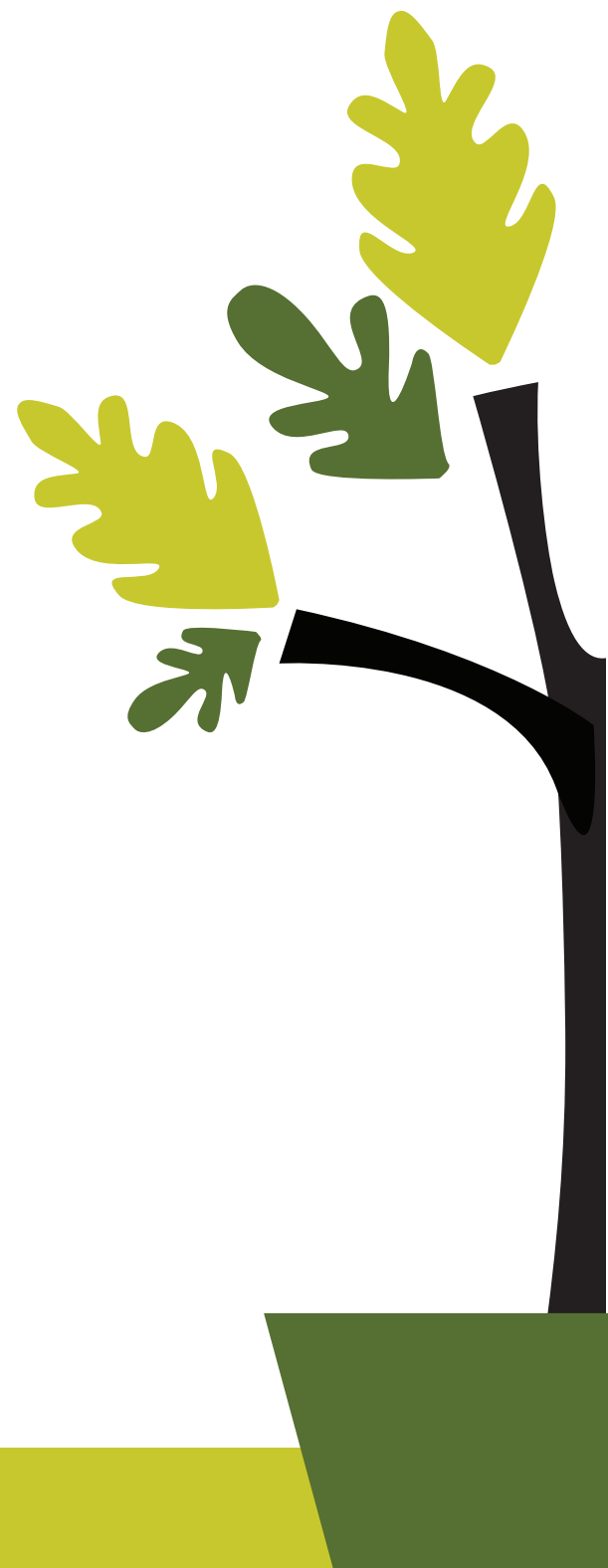
- Do not add soil amendments or fertilizer when planting.
- Remove any tags or labels from the tree.

MULCHING YOUR TREE:

- Spread 2 to 3 inches of mulch around the base of your tree but avoid the trunk.

WATERING YOUR TREE:

- Take extra care to ensure your plant is watered in the first two weeks of planting.
- Keeping your tree watered is important during the first year.
- Keep the soil and mulch moist but not soggy.
- Avoid watering so much that you see standing water.



**TEN MILL¹ON
TREES**
FOR PENNSYLVANIA



HOW TO PLANT BARE ROOT TREES

BEFORE YOU PLANT YOUR TREE(S) MAKE SURE YOU HAVE:

- Planting instructions
- Scissors
- Spade or shovel
- Small bag of mulch

PLANTING INSTRUCTIONS:

- Unpack your trees and carefully untangle the roots.
- Soak the roots in water 3 to 6 hours.
- Dig a hole wider than seems necessary.
- Remove any grass within a 3-foot circular area.
- Set the tree in the hole at ground level.
- Firmly pack the hole with soil and water your tree.

- Do not add soil amendments or fertilizer when planting.
- Remove any tags or labels from the tree.

MULCHING YOUR TREE:

- Spread 2 to 3 inches of mulch around the base of your tree but avoid the trunk.

WATERING YOUR TREE:

- Take extra care to ensure your plant is watered in the first two weeks of planting.
- Keeping your tree watered is important during the first year.
- Keep the soil and mulch moist but not soggy.
- Avoid watering so much that you see standing water.

**TEN MILL¹ON
TREES**
FOR PENNSYLVANIA

